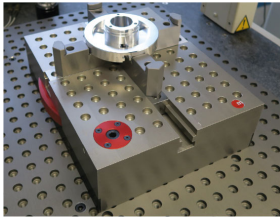
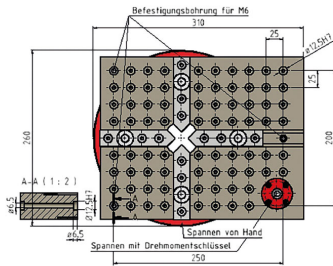
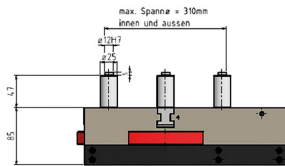
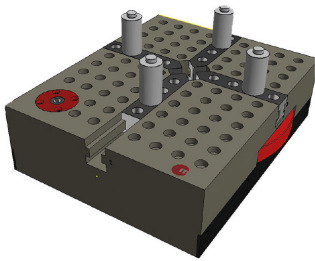


## CLAMPING SYSTEM FOR THE CMM MADE OF ALUMINIUM, ALTEF® COATED



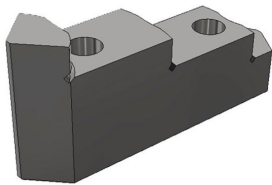
**TYPE | ITEM NO.**

3D-Flex-Fix | 196046.00  
(Aluminium, Altef® coated, see Gtd)

**Inclusive:**

1 set of base jaws 4 ZAG made of steel  
(196035.00), anti-corrosive (Reinox),  
see **Gtd**  
4 pin jaws Ø 25, M6, made of steel, anti-  
corrosive (Reinox), see **Gtd**  
centering Ø 12.5 mm (196059.00)  
1 Allen screwdriver, PB 207L, wrench size  
8 mm

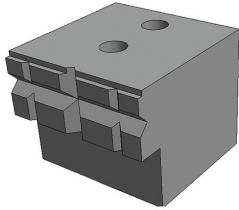
## SET OF JAWS 4 ZA 3D-FLEX-FIX



**TYPE | ITEM NO.**

Set of jaws 4 ZA 3D-Flex-Fix | 196038.00  
reversible top jaws made of aluminium,  
black anodized, incl. 8 jaw screws M6  
Pin jaws 196043.00 can also be ordered  
(see below)

## PRISM JAW 3D-FLEX-FIX

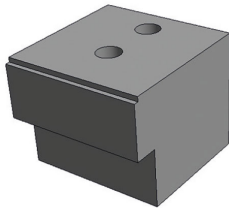


#### TYPE | ITEM NO.

Prism jaw 3D-Flex-Fix | 196055.00  
1 top jaw made of aluminium, black anodized, incl. 8 jaw screws M6  
Pin jaws 196043.00 can also be ordered (see below)

---

### BLOCK JAW 3D-FLEX-FIX



#### TYPE | ITEM NO.

Block jaw 3D-Flex-Fix | 196056.00  
1 top jaw made of aluminium, black anodized, incl. 8 jaw screws M6  
Pin jaws 196043.00 can also be ordered (see below)

---

### PIN JAW 3D-FLEX-FIX



#### TYPE | ITEM NO.

Pin jaw 3D-Flex-Fix / 6 ZAS 240 | 196059.00  
1 pin jaw Ø 25 mm made of steel, anti-corrosive (Reinox), see **Gtd**, thread M6, centering Ø 12.5 mm

---

### POSITIONING SLEEVE 3D-FLEX-FIX



## TYPE | ITEM NO.

Positioning sleeve 3D-Flex-Fix / grid plate  
25 mm | 196059.00  
for bore Ø 12.5 mm  
ground (see **Gtd**) and polished

---

## APPLICATION EXAMPLES